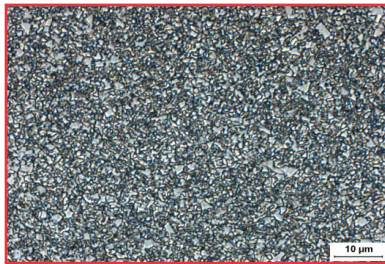


Powder Metal Tooling (Wire EDM)

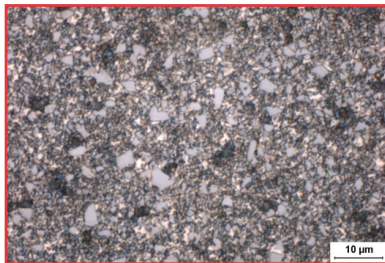
Application Background

The grades shown are a popular choice for powder metal dies and core pins and are used in both wire EDM and non-wire EDM applications. The unique properties of these grades make them an excellent choice for a variety of PM applications.



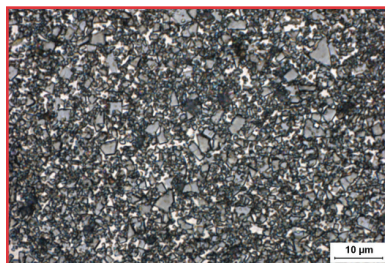
GC-010

| IND CODE | STANDARD | PREMIUM | COMMENTS |
|----------|----------|--------------------|---|
| C2/C9 | GC-106 | GC-0004 GC-010* | <ul style="list-style-type: none"> > High Wear Dies > Small WEDM Dies & Pins > Excellent for Pressing Ceramics & Large non-EDM Liners |



GC-813CT

| IND CODE | STANDARD | PREMIUM | COMMENTS |
|----------|----------|-----------|---|
| C10 | GC-209 | GC-813CT* | <ul style="list-style-type: none"> > High Wear > Fine Teeth > WEDM Dies & Cores > Intricate Forms > Ceramics > Excellent for Stainless PM |



GC-411CT

| IND CODE | STANDARD | PREMIUM | COMMENTS |
|----------|----------|-----------|---|
| C11 | GC-211* | GC-411CT* | <ul style="list-style-type: none"> > Med. Size WEDM Dies > High Toughness > Form, Gear Dies & Cores > Excellent for Stainless PM > Excellent Wear |

* WEDM GRADE

T = ADDITION OF TaC FOR LUBRICITY

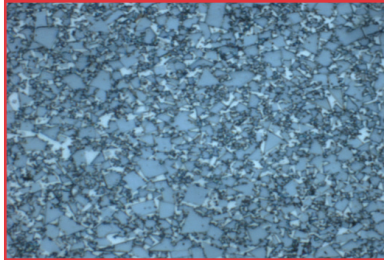
CT = GRADES ARE CORROSION RESISTANT

NOTE: The "T" designation in all grades represents the addition of tantalum carbide, which adds lubricity and resistance to galling in wear areas. Some of the above grades are also available without the addition of tantalum.

To ensure the highest metallurgical quality, General Carbide processes all grades in sinter-HIP furnaces.

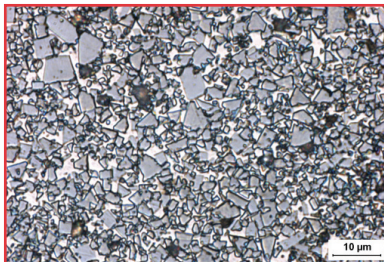
All inserts provided with O.D. and overall length ground to your specifications.

EXPEDITED DELIVERY AVAILABLE



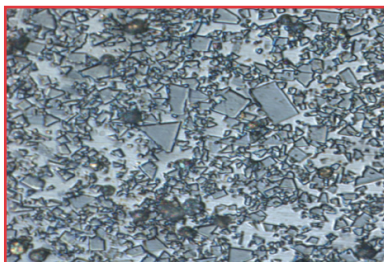
GC-712CT

| IND CODE | STANDARD | PREMIUM | COMMENTS |
|----------|----------|-----------------------|--|
| C12 | GC-313* | GC-411CT* GC-712C* | <ul style="list-style-type: none"> > Med./Large Size WEDM Dies > High Toughness > Form, Gear Dies & Cores > Excellent Wear |



GC-613CT

| IND CODE | STANDARD | PREMIUM | COMMENTS |
|----------|----------|------------------------|---|
| C13 | GC-315* | GC-613CT* GC-415CT* | <ul style="list-style-type: none"> > Med./XL Size WEDM Dies > Extreme Toughness > Good Wear > Complex Internal Shapes |



GC-425CT

| IND CODE | STANDARD | PREMIUM | COMMENTS |
|----------|----------|-----------------------|--|
| C14 | GC-320* | GC-618T* GC-425CT* | <ul style="list-style-type: none"> > High Impact Sizing Dies > Complex Internal Shapes > Excellent Shock & Impact Strength > GC-425CT exhibits the highest fracture toughness of any grade |

* WEDM GRADE

T = ADDITION OF TaC FOR LUBRICITY

CT = GRADES ARE CORROSION RESISTANT

NOTE: The "T" designation in all grades represents the addition of tantalum carbide, which adds lubricity and resistance to galling in wear areas. Some of the above grades are also available without the addition of tantalum.

To ensure the highest metallurgical quality, General Carbide processes all grades in sinter-HIP furnaces.

All inserts provided with O.D. and overall length ground to your specifications.

EXPEDITED DELIVERY AVAILABLE

