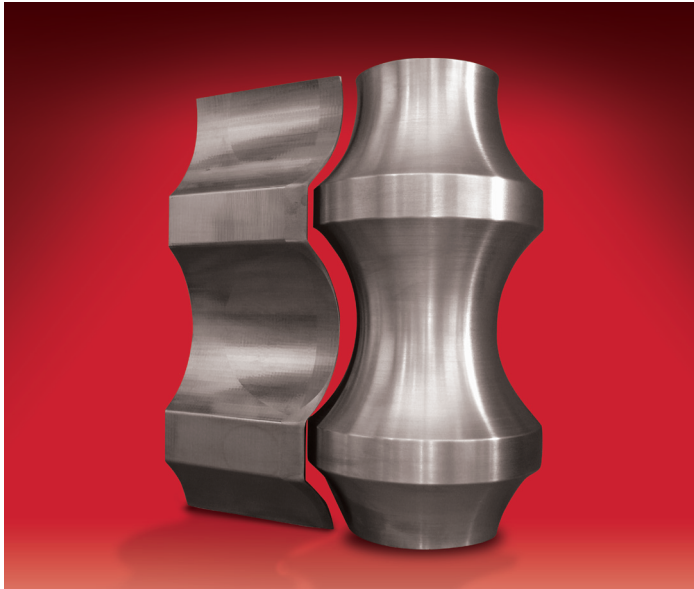




## As the Cost of Materials Keeps Going Up, We Keep Adding Value to Rooftile Tooling



For more than 30 years, we've been adapting to market forces and changes within the industry while continuing to set the standards for:

- > Extended Tooling Life
- > Competitive Pricing & Delivery
- > Tool Quality & Consistency
- > Engineering Service & Wear Solutions
- > Mated Tool Design
- > Made exactly to customer specifications

If you need carbide blanks, preforms, finished assemblies, or finished steel tooling, General Carbide can supply you with:

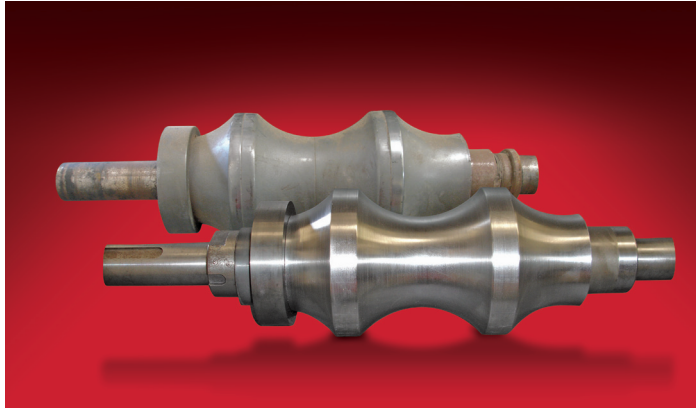
- > Rollers & Slippers
- > Adapters
- > Bed & Guide Plates
- > Bed & Carbide Runners
- > Bridge Assemblies
- > Cheek Plates & Bars
- > Cutoff, Depalletor, Guillotine & Side Trimmer Blades
- > Drive Dogs
- > Entry Guides
- > Lock Blocks & Rings
- > Making & Profile Heads
- > Nail Punches & Packer Pins
- > Racker Arms
- > Roller End Plates & Shafts
- > Stir Pin Bushings
- > Templates
- > Thicknessers
- > Water Channels & Channel Rollers
- > Wear Pads, Strips & Collars



***To ensure the highest metallurgical quality, General Carbide processes all grades in sinter-HIP furnaces.***

***Complete slipper and roller CNC grinding capabilities for generated profile and compaction repeatability.***

# Evaluating, Re-Grinding & Repairing Rooftile Tooling to Like-New Condition

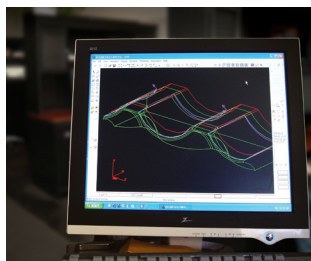


Besides making new tooling, we're able to refurbish your spent components with cost-effective repairs and re-grinds.

In fact, we're the industry leader when it comes to restoring finished tooling and preforms to like-new condition.

To give you peace-of-mind, all of your refurbished carbide and steel roof tile tooling is restored to OEM quality to provide consistent performance.

For the best combination of tooling and service you'll find anywhere, contact our **Rooftile Tooling Team**.



## **TECHNICAL INFORMATION**

*Materials applications, grade recommendations, wear & compaction solutions*

### **Lou Snell**

**Phone:** 928/486-5796

**Email:** lsnell@generalcarbide.com

## **CUSTOMER SERVICE**

*All quotation requests, order entry & order tracking*

**Phone:** 800/245-2465 or 724/836-3000

**Fax:** 800/547-2659 or 724/836-6274

**Email:** sales@generalcarbide.com

## **MARKET MANAGER**

*Technical, quotation & order entry support*

### **Mike Ansell**

**Phone:** 800/245-2465 or 724/836-3000

**Fax:** 800/547-2659 or 724/836-6274

**Email:** mjansell@generalcarbide.com